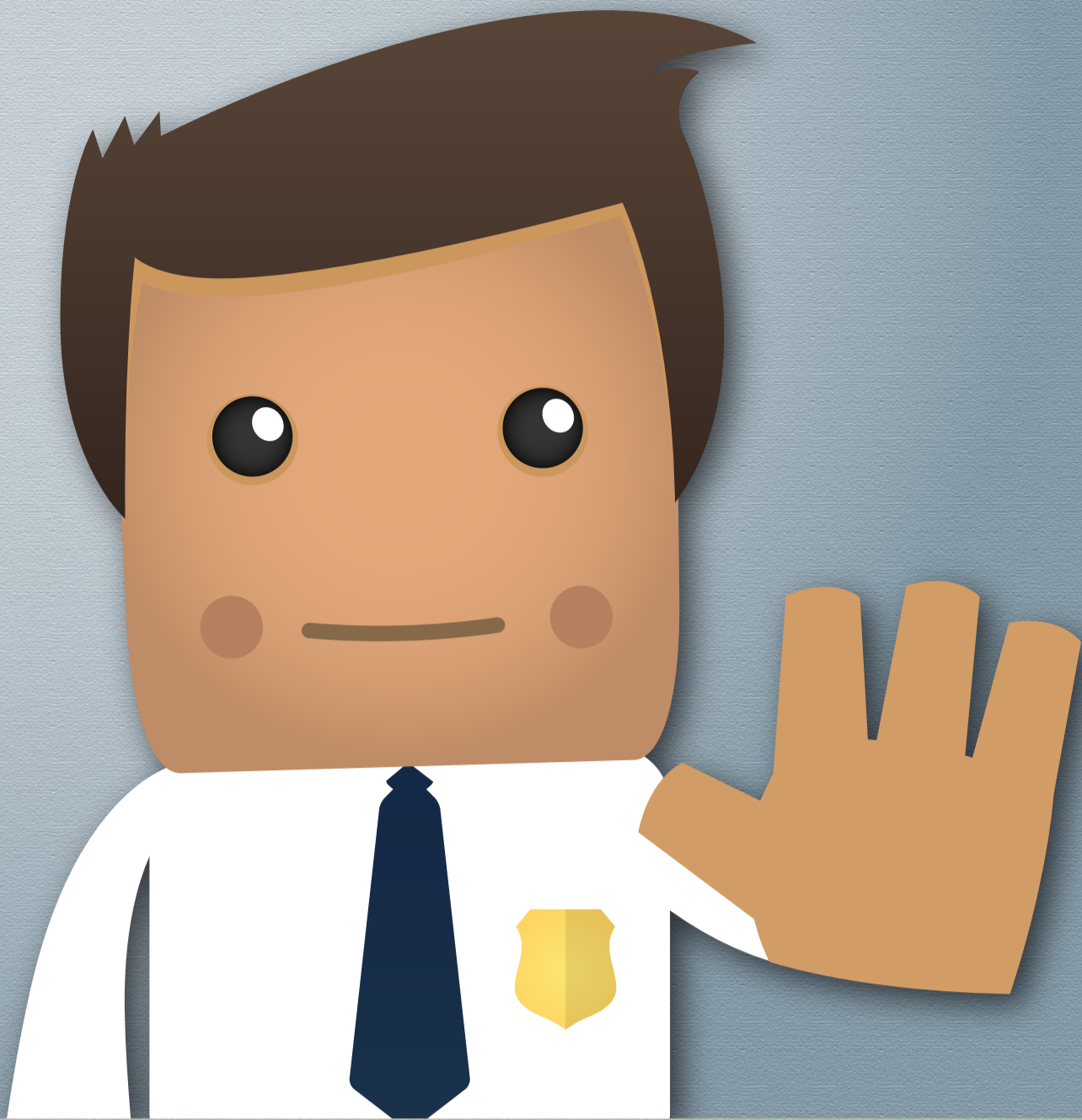


HOSPITAL SECURITY

HEALTH FACILITIES
MANAGEMENT



75%

OF HOSPITALS
say maintaining security has
become **MORE CHALLENGING**
over the past two years

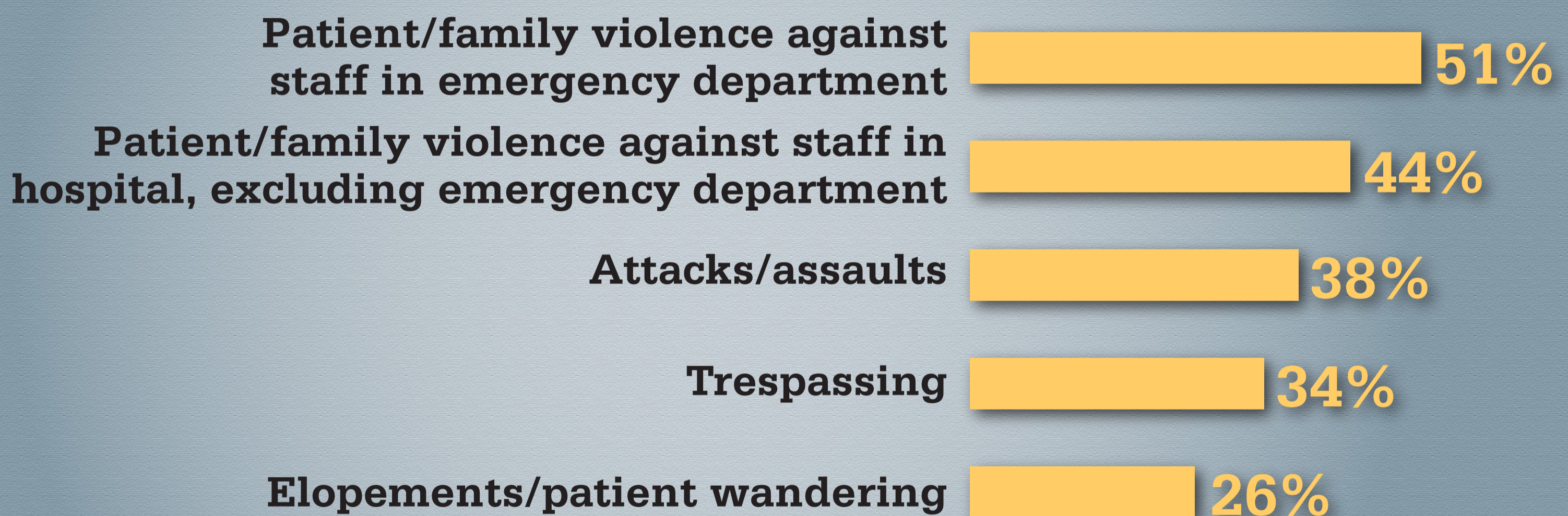
Experts say an increase in **BEHAVIORAL HEALTH** issues and **OPIOID ABUSE** are contributing factors.

“Funding has been stripped for behavioral health care patients. EDs across the U.S. are filling up with these patients and there just aren’t enough beds, which creates any number of workplace violence incidents.”

– Bryan Warren, CHPA, director of corporate security, Carolinas Healthcare System, Charlotte, N.C.



Over the past 12 months, percentage of facilities that have seen an increase in:



Health care facilities stress **PREVENTION**

85%

have implemented
management of
**AGGRESSIVE
BEHAVIOR
TRAINING**



**TOP 5 SECURITY SYSTEMS
used in health care facilities**

1. Electronic access control
2. Digital IP-video surveillance
3. Vendor management system
4. Wired panic alarm system
5. Electronic incident reporting system

All data comes from the *Health Facilities Management/ASHE* 2016 Hospital Security Survey. The complete report can be found at <http://www.hfmmagazine.com/articles/2500-hospital-security-survey-landing-page>

HEALTH FACILITIES
MANAGEMENT

