



AIRING IT OUT This gypsum-board wall construction product has been third-party certified as a low-emitting material and tested to be free of sulfur off-gassing and therefore not considered a problematic corrosive drywall type. The board is available in a variety of dimensions.

Temple-Inland • 800-231-6060 • www.templeinland.com



DEFT DISPENSING The PROmanager-Rx system enables hospitals to automate the dispensing of tablets, capsules and other oral solid medications that come prepackaged from drug manufacturers in unit-dose, bar-coded form. It increases dispensing accuracy and frees pharmacists up for other activities. **McKesson Corp.** • 415-983-8300 • www.mckesson.com



DIAL YOUR PREFERENCE

The ChekPoint EC-3106 electronic faucet can switch from a sensor faucet to a manual one simply by rotating the top cap until it locks into the desired mode. Its temperature and sensor range also can be adjusted.

T&S Brass and Bronze Works Inc.
800-476-4103 • www.tsbrass.com



TOWEL OFF The Kleenex Slimfold Towel System delivers a full-sized, premium hand towel, yet is small enough to fit into spaces too tight for typical towel dispensers.

Kimberly-Clark Professional
888-346-4652
www.kcprofessional.com

CRITICAL CONNECTION

Available in continuous current ratings from 100 to 3,000 amps, RTS Series Bypass/Isolation Switches dramatically simplify the selective coordination of over-current devices in back-up power systems for mission-critical health care facilities.

Ruselectric Inc.
781-749-6000
www.ruselectric.com

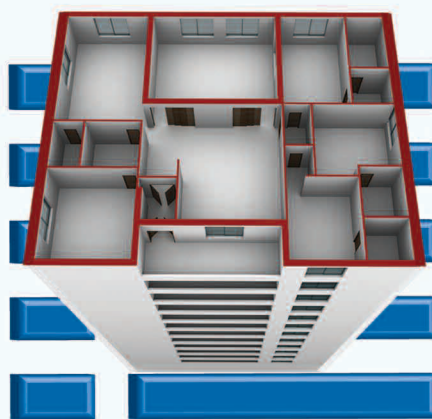


POWER PLAYER PowerLogic "ION Enterprise Software" power management package offers metering and protection. It has extensive new capabilities via a Web reporter module that enables users to create, customize and schedule reports.

Schneider Electric • 847-397-2600 • www.schneider-electric.us



Success Made Simple.



 **TMA**SYSTEMS

TMA provides world-class Maintenance Management Software for healthcare facilities throughout the world.

We meet your organization's maintenance needs by providing a CMMS as either a Client-Hosted or Software as a Service (SaaS) solution.

With the flexibility to start small and add to your software, our scalable product set and optional modules grow with your organization's needs, requirements and demands.

sales@tmasystems.com

800.862.1130

www.tmasystems.com



RUGGED BEAUTY The Xorel line of woven textile wallcovering, panel and upholstery solutions is designed for high-traffic, high-maintenance areas. It has been proven to resist damage after multiple cleanings with Virex Tb disinfectant cleaner. Xorel is backed by a seven-year warranty.

Carnegie • 516-678-6770 • www.carnegiefabrics.com

SUSTAINABILITY ON DISPLAY

Genon "Connection" wallcovering has pencil-thin circles overlaid with smaller circles and rounded rectangles for a dynamic pattern. It contains 30 percent recycled content and at least 20 percent post-consumer waste.

Omnova Solutions Inc.
330-869-4200
www.omnova.com



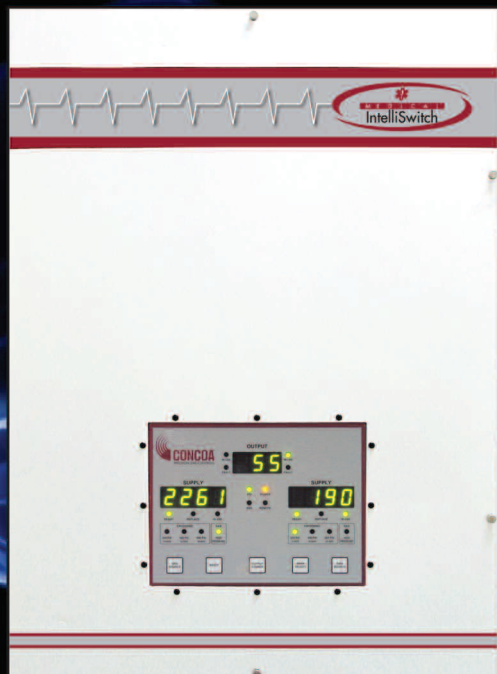
CRYOGENIC OR HIGH PRESSURE?... ...NO PROBLEM.

CONCOA's New Award Winning* Medical IntelliSwitch™

Advanced Features

The new NFPA 99-compliant Medical IntelliSwitch is the first medical gas pipeline management system of its kind able to regulate from either cryogenic and/or high pressure sources making it a truly universal switchover.

- Automatic dual line regulator control
- Right or left side reserve inlets
- NEMA 12 or NEMA 4 enclosure
- Advantium RX™ alarm software
- Micro-processor control
- Field adjustable software



Be sure to visit our booth at Pittcon in Orlando, FL
March 1-4, Booth No. 3141



CONCOA
PRECISION GAS CONTROLS

1501 Harpers Road
Virginia Beach, VA 23454 USA
1.800.225.0473

www.CONCOA.com/medical_intelliswitch.html

*Golden Gas Award, Gases & Instrumentation International 2009