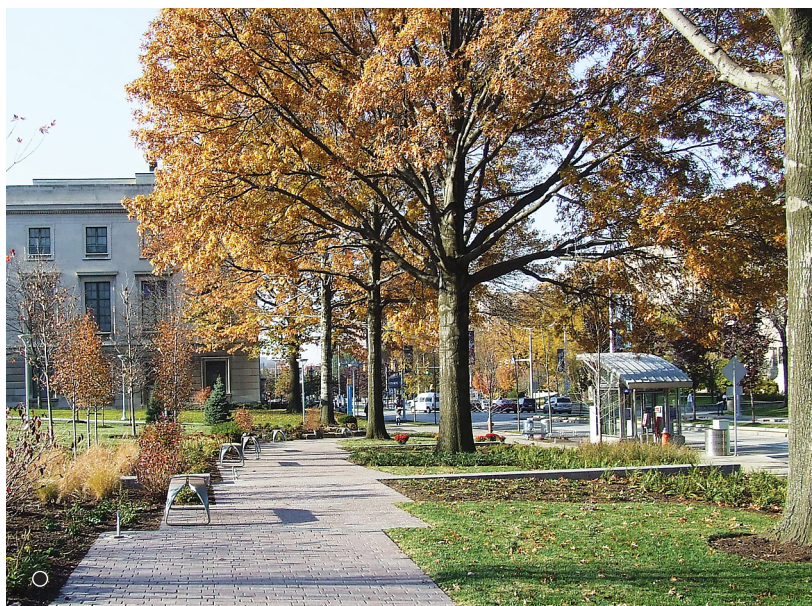




EASY TO USE The fully enclosed, touchless Nvi electronic tissue dispenser is designed to reduce waste and labor costs, while minimizing the risk of cross-contamination. Features include two-year battery life guarantee, adjustable tissue-length dispensing and ease of use for those with limited mobility.

Oasis Brands • www.nvinow.com



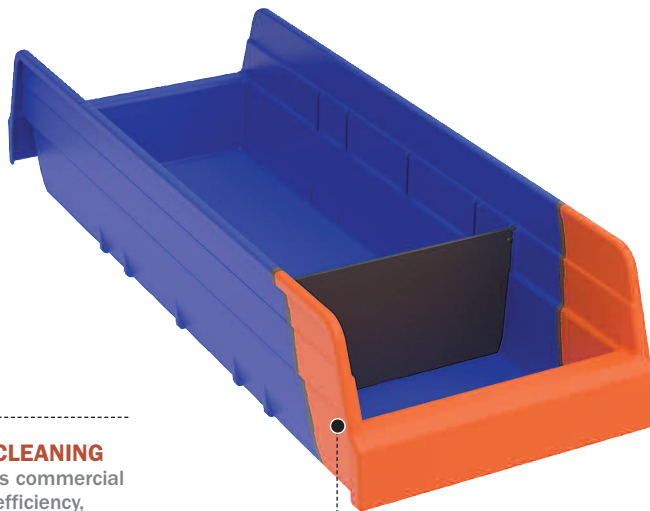
ROCK STEADY The Imperial Groundfloor POM Porphyry-on-mesh is cut to individual cobbles which are gauged perfectly and set on a light plastic mesh. The stone is ideal for use near landscaping as it allows gradual root growth and helps slow water runoff for maximum moisture retention. Minimal repair and maintenance are required. **Western Porphyry • www.westernporphyry.com**



EFFICIENT CLEANING

The company's commercial laundry, high-efficiency, front-load washers cut utility costs up to 60 percent. The washers come standard with the exclusive Turbo-Clean wash system. The baffles deliver water directly where needed for complete saturation with less water. A high-speed spin extractor removes excess water.

Maytag Commercial Laundry
www.maytagcommerciallaundry.com



STORAGE SOLUTION The company has expanded its line of two-toned Indicator Bins, a low-cost system that offers inventory control at a glance. The bins offer easy organization of supplies and work in-process, while reducing excess inventory. The double-hopper bin can be filled or picked from both sides. The rolled ridge provides added strength when filled to capacity.

Akro Mils • www.akro-mils.com

» ON OUR RADAR «



FAST MEASURING The next generation Elitepro SP power meter features increased memory, higher sampling speeds, standard line power operation and fast USB downloads. It offers some power quality features such as the ability to view voltage, current and power waveforms in real time, and it can calculate harmonics to the 63rd order. External power is not required.

Dent Instruments • www.dentinstruments.com



SURGE SAFE The medical-grade power strip with surge suppression is for use within six feet of patient care areas. The power strip has four outlets and comes with a 15-foot cord and NEMA 5-15P hospital-grade plug. It features a switchless design to prevent accidental shutoff and diagnostic LED to show power is present and surge-protected.

Tripp Lite
www.tripplite.com

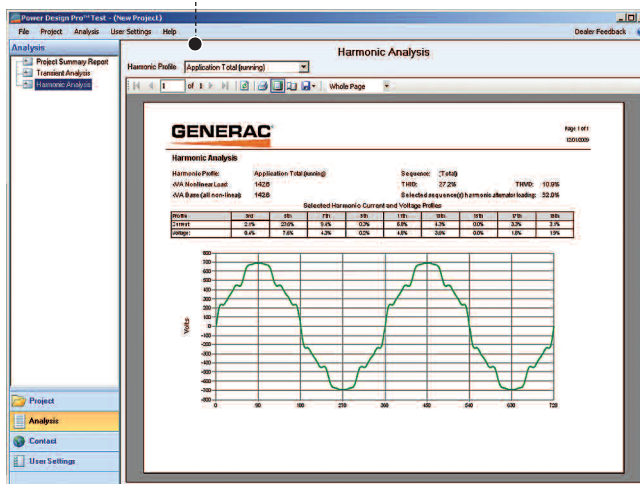


HOT SHOT Designed for noncontact preventive maintenance, the HeatSeeker 160 thermal imaging camera identifies potential problems before they occur by detecting hot spots on motors, switch gear, processing pipes, compressors and fuse panels. It features a Class II laser and delivers sharp images in a temperature range of 14 to 482 degrees F.

Ideal Industries
www.idealindustries.com

GUESSWORK GONE The company has enhanced its Power Design Pro generator sizing software with a new exhaust piping module. The piping module allows users to enter the length of the exhaust piping run and the number of elbow types. It selects the appropriate exhaust piping for a given generator and allows users to select the pipe size.

Generac Power Systems • www.generac.com





SIGN IN The Venus sign system comprises an anodized aluminum extrusion body, an optional design accent bar and insert options that provide a flexible system and a distinguished look. The system offers more than 40 predefined standard sign sizes, from directional signs to nameplates.

ASI Sign Systems • www.asisignage.com



SHOW THE WAY

The company's interactive Wayfinder features a friendly avatar and touch-screen display to help guide visitors, patients and staff. If a visitor prefers a language other than English, the avatar will speak, and individualized instructions will appear in text in the selected language.

LogicJunction
www.logicjunction.com

GLOW IN THE DARK The company's acrylic exit signs come with new stand-off barrels for 1-inch installation from the wall. Photoluminescent exit signs are nonelectrical — they have no light bulbs or electrical wiring — and are listed for high-location and floor-proximity installation. They are UL-and ETL-listed with a life expectancy of 25-plus years.

American Permalight
www.americanpermalight.com



CUSTOM MADE The company provides consultation, design, fabrication and installation services for interior and exterior wayfinding and directional signs. Signs are custom fabricated to complement any facility. The company offers a variety of signage in various colors and materials. Digital capabilities can reproduce a client's artwork or the company will create an original design.

Creative Sign Designs
www.creativesigndesigns.com

